

# LCD video walls

## Innovations that bring value

LCD video walls deliver great large visualization experiences, with magnificent image quality, great flexibility and low Total Cost of Ownership (TCO). At Barco, we take tiled LCD video walls a step further, perfecting every component - including hardware, software and services.

### A perfect image for any application

Barco LCD video walls are versatile solutions that feel at home in any indoor environment. The magnificent images and high reliability match the needs of professionals in markets including mission-critical control rooms, corporate lobbies, boardrooms, and many more. Our innovative automatic calibration solutions, which ensures perfectly balanced images across the entire wall, makes sure the viewing experience remains impeccable at any time.

### Designed for reliability

The LCD video wall is a critical asset for your operations. That is why we have embedded reliability at the heart of the solution. For example, the Barco UniSee series offers optional redundant and remote power supplies, which automatically take over in case should the primary unit fail - without any downtime.

### At your service, at any time

Peace of mind doesn't just mean selecting the best LCD video wall in the market - it's also about the certainty that any issue will be resolved quickly and without additional cost during the lifetime of your video wall. Barco service contracts give you this guarantee. You can choose between different CarePacks to match your needs optimally.



# Barco LCD video wall portfolio

## Discover the unseen Barco UniSee - Premium series

Barco UniSee



Barco UniSee 500



### Key features

- NoGap technology
- Two brightness options
- High end LCD video wall platform
- Fanless – no noise



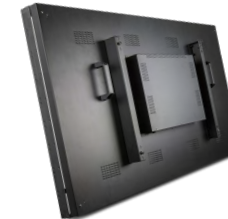
reddot design award  
best of the best 2018

	Barco UniSee	Barco UniSee 500
Screen size	55"	
Brightness (typical)	700 Nit	500 Nit
Screen bezel	None (bezel-less)	
Sense X real-time calibration	Yes	
Redundant remote or integrated power supply	Optional	
Connectivity	2x DisplayPort 1.2 in 1x DisplayPort 1.2 out 2x HDMI in 2x USB 2x Ethernet 2x DVI (optional)	
Power consumption	185 W (500 nit)	130 W (350 nit)
Screen haze	28%	28%
Mount	UniSee Mount	
Connect kit	UniSee Connect	
Services	UniSee CarePacks	
Order number Barco UniSee	R9867700	R9867500
Order number Connect kit	R9867740 & R98484000	R9867740 & R98484000

M00789-R09-072021-LF

## Standing out through value Barco OverView - Mid-range series

OverView LVD-5521C



OverView KVD-5521C



### Key features

- High quality viewing experience
- Modular approach for easy servicing and less downtime
- Industry leading mid-range offering
- Fanless - no noise

	OverView LVD-5521C	OverView KVD-5521C
Screen size	55"	
Brightness (typical)	500 Nit	
Screen bezel	1.8 mm / 0.07"	3.5 mm / 0.14"
Sense X automatic calibration	Yes	
Redundant remote power supply	No	
Connectivity	2x DisplayPort 1.2 in 1x DisplayPort 1.2 out 2x HDMI in 2x USB 1x Ethernet 2x DVI (optional)	
Power consumption	170 W (500 nit native)	190 W (500 nit native)
Screen haze	28%	25%
Mount	Any third party VESA 600x400	
Connect kit	LCD Connect	
Services	LCD CarePacks	
Order number	R9867808	R9867804
Order number Connect kit	R9811016	R9811016